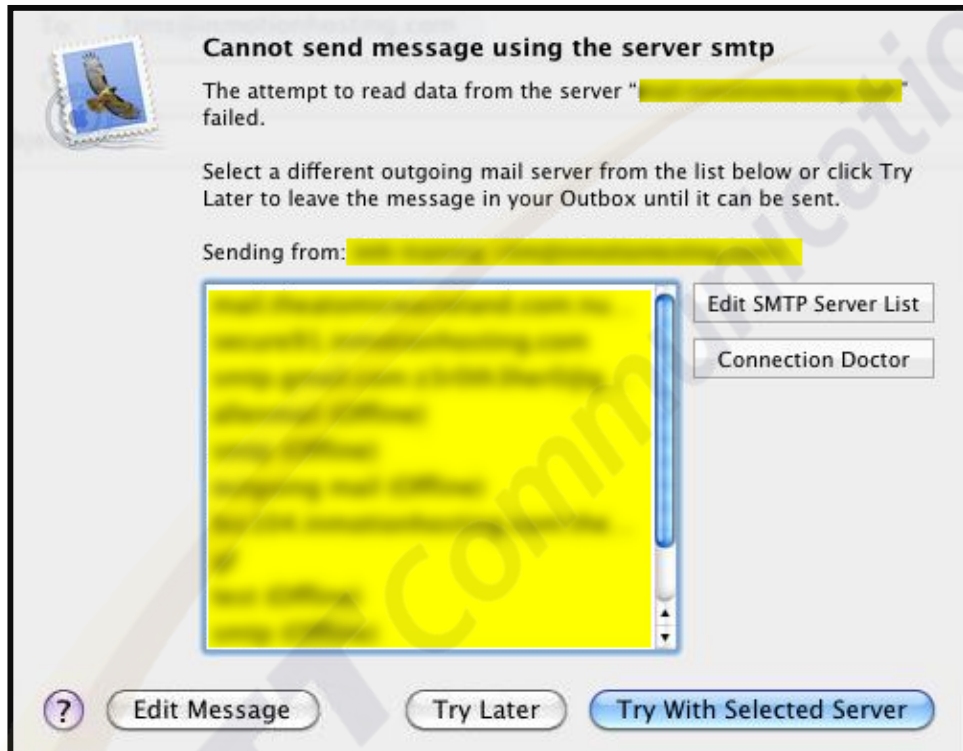


## Mac Mail - Cannot Send Message Using the server

(Mail Hosting: NTT Communications (Thailand) Co., Ltd.)

Cannot send message using the SMTP server



You will need to update the SMTP server settings - most likely you're dealing with a port 25 blocking issue.

If you are using a SSL on your site you can use the SSL port 465.

Make sure the box to use SSL is checked. If not, you can use port 587 and leave the box unchecked.

The correct ports are below:

**Non-SSL outgoing SMTP:** 587

**SSL enabled outgoing SMTP:** 465

If you have any questions or concern ...

**Please take note of any error messages and contact support-mail team as soon as possible.**

Credit: inmotionhosting

Last update: 01/03/2017

NTT Communications